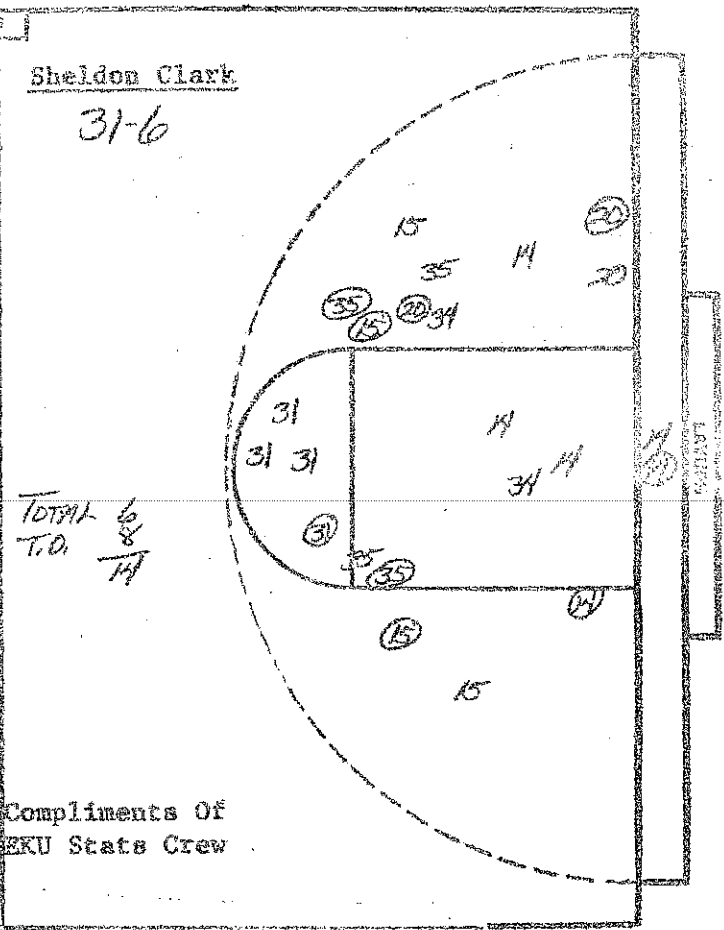


TURNOVERS

1	31
31	15
12	35
4	20
12	15
52	31
7	14
8	20
9	
10	
11	
12	
13	
14	
15	
16	
17	
18	



Compliments Of
EKU Stats Crew

NO.	Mason County	FG-FGA	FT-FTA	RB	P	TP	A
32	LISA DOYLE	4-9	0-1	6	1	8	6
39	LAVERN BLUFORD	8-11	1-4	8	3	17	1
42	TRACY PERRY	4-6	0-0	11	1	8	1
12	PATTE WELLET	5-12	2-2	1	2	12	1
1	KAR GRANSON	4-10	2-3	1	2	10	1
10	MECHELLE SWARTZ	0-0	0-0	1	0	0	2
52	BARB POLLITT	0-1	0-0	2	0	0	0
		-	-				
		-	-				
		-	-				
		-	-				
		-	-				
		-	-				
		-	-				
		-	-				
		-	-				
		-	-				
		-	-				
		-	-				
TOTALS		25-49	5-10	31	9	55	12

PERCENTS: 51.0 FG, 50.0 FT, 2 TEAM REBOUNDS (NOT IN TOTAL)

NO.	Sheldon Clark	FG-FGA	FT-FTA	RB	P	TP	A
35	DEBBIE SCOTT	4-7	0-0	4	1	8	0
14	BETTY CRUM	4-11	2-2	7	3	10	1
20	TAMMY DALTON	2-4	0-0	5	4	4	0
31	MILDRED BOBSON	2-7	0-0	1	2	4	9
15	LORI ANN MILLIS	7-14	5-8	7	2	19	4
34	BELISSAH BURCHENEN	0-2	0-0	1	1	0	0
23	TAMMY FARWEN	0-0	0-0	0	0	0	0
		-	-				
		-	-				
		-	-				
		-	-				
		-	-				
		-	-				
		-	-				
		-	-				
		-	-				
		-	-				
		-	-				
		-	-				
TOTALS		19-48	7-10	25	13	45	14

PERCENTS: 39.6 FG, 70.0 FT, 3 TEAM REBOUNDS (NOT IN TOTAL)

SCORE BY HALVES: Mason County 16-16-10-13=55

Sheldon Clark 12-12-12-9=45

OFFICIALS: JERRY JANSSEN & HADE OMBROSON
ATTENDANCE: SASSON TIDD 2,600 EST